

Rex Gooding



Plot 1 Castle Stables, Six Hills Lane, Little

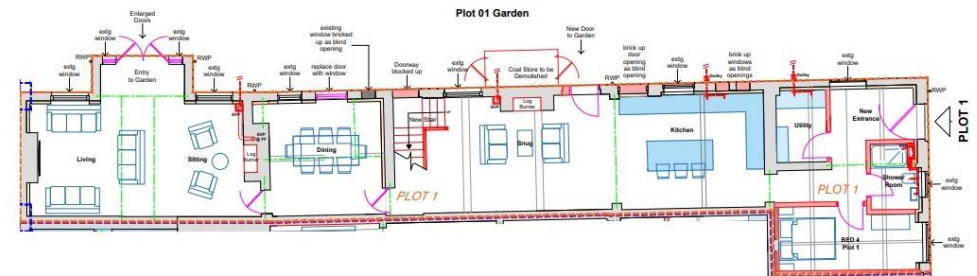
Guide Price: £750,000

Plot 1 Castle Stables, Six Hills Lane, Little Belvoir Estate, LE14 3JD

Groom's Lodge is a four-bedroom character property that will be sympathetically refurbished and renovated to create a first-class family home. Located in an idyllic location on the picturesque Little Belvoir Estate, Caste Stables is an exclusive development of just two barn conversions and two houses. The accommodation consists of a large kitchen diner, generous living room, home office, master bedroom with en-suite, three further bedrooms and two bathrooms. The property enjoys a particular lovely aspect across fields towards woodland. Large garden and double car port.

Accommodation & Amenities

- Beautiful Estate Setting
- Lovely Countryside Aspect
- Flexible Accommodation
- Exclusive Development 2 x Barns & 2 x Houses
- Highly Regarded Local Developer
- Period Conversion to Superb Contemporary Home
- Internal Layout May be Subject to Small Changes (Internal Area will not Change)





SHEPPARD
DEVELOPMENTS

